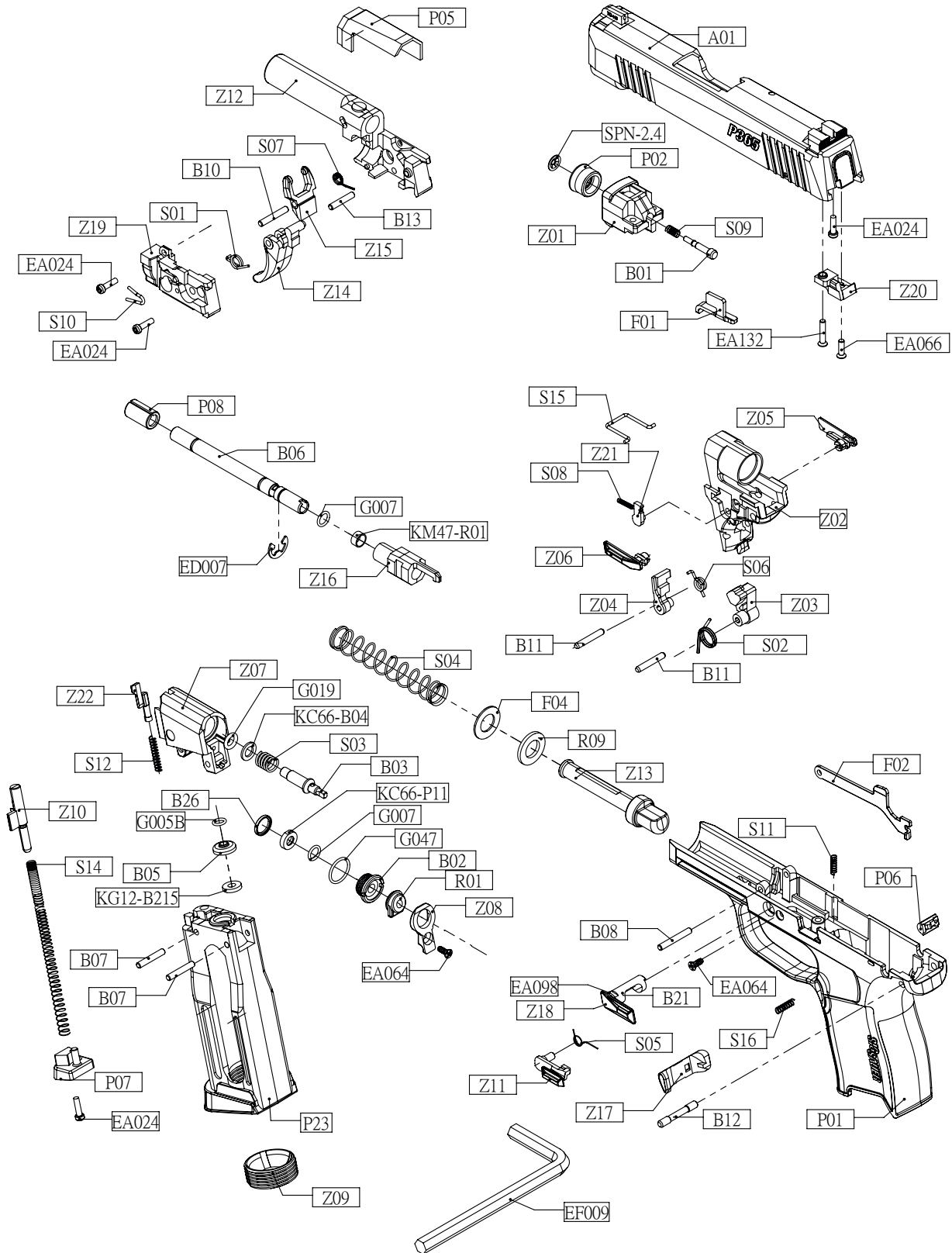


PRODUKTZEICHNUNG

SIG SAUER P365 CO₂

SIG SAUER®



PRODUKTZEICHNUNG

SIG SAUER P365 CO₂

SIG SAUER®

BOM of P365		
PART#	ITEM	KWC#
KMB29-P01	FRAME	S10-03245-B
KMB29-P02	CYLINDER PACKING	S10-03246-B
KMB29-P05	OUTER BARREL ACCESSORY	S10-03247-B
KMB29-P06	MAGAZINE CATCH ACCESSORY	S10-03248-B
KMB29-P07	MAGAZINE BASE LOCATOR	S10-03249-B
KMB29-P08	BARREL FIXTURE	S10-03250-B
KMB29-A01	SLIDE	H15-01397-A
KMB29-P23	MAGAZINE	S10-03251-B
KMB29-Z01	CYLINDER	H15-01398-A
KMB29-Z02	CHASSIS	H15-01399-A
KMB29-Z03	HAMMER	H15-01400-A
KMB29-Z04	HAMMER CATCH	H15-01401-A
KMB29-Z15	TRIGGER LINKAGE	H15-01402-A
KMB29-Z16	BARREL LINKAGE	H15-01403-A
KMB29-Z05	SAFETY- R	H15-01404-A
KMB29-Z06	SAFETY- L	H15-01405-A
KMB29-Z11	SLIDE STOPPER	H15-01406-A
KMB29-Z20	SLIDE REAR ACCESSORY	H15-01407-A
KMB29-Z07	MAGAZINE RIB	H15-01408-A
KMB29-Z08	VALVE REAR COVER	H15-01409-A
KMB29-Z10	MAGAZINE FOLLOWER	H15-01410-A
KMB29-Z22	BB CATCH	H15-01411-A
KMB29-Z21	SAFETY CATCH	H15-01412-A
KMB29-Z12	OUTER BARREL BASE	H15-01413-A
KMB29-Z13	RECOIL GUIDE ROD	H15-01414-A
KMB29-Z19	OUTER BARREL BASE- L COVER	H15-01415-A
KMB29-Z14	TRIGGER	H15-01416-A
KMB29-Z17	MAGAZINE CATCH	H15-01417-A
KMB29-Z18	OUTER BARREL CATCH	H15-01418-A
KMB29-Z09	MAGAZINE BOTTOM CAP	H15-01419-A
KMB29-F01	FIRING PIN ACCESSORY	H18-00233
KMB29-F02	TRIGGER BAR	H18-00234
KMB29-F04	RECOIL GUIDE ROD BUFFER-METAL	H18-00235
KMB29-R01	VALVE REAR COVER PACKING	R03-00229
KMB29-R09	RECOIL GUIDE ROD BUFFER-RUBBER	R03-00164-2
KC66-P11	VALVE CAP PACKING	S10-02905-B
KM47-R01	RUBBER CHAMBER-HOP UP	R03-00143-MN
G019	O-RING S-5	R03-00189
G007	O-RING 1.0*5	R03-00190
G047	O-RING 1.0*10	R03-00230
G005B	O-RING 1.0*4	R03-00116-PU
KMB29-B01	FIRING PIN	H11-00737
KMB29-B02	VALVE CAP	H11-00738
KMB29-B03	VALVE	H11-00739
KG12-B215	PUNCTURE VALVE PACKING	H11-00201
KMB29-B05	PUNCTURE VALVE	H11-00741
KMB29-B06	BARREL	H22-00119
KMB29-B07	MAGAZINE PIN	H11-00742
KMB29-B08	OUTER BARREL BASE PIN	H11-00743
KMB29-B10	TRIGGER LINKAGE PIN	H11-00751
KMB29-B11	FIRING PIN CATCH PIN	H11-00744
KMB29-B12	CHASSIS PIN	H11-00745
KMB29-B13	TRIGGER PIN	H11-00746
KC66-B04	VALVE WASHER	H11-00508
KMB29-B21	OUTER BARREL CATCH AXLE	H11-00748
KMB29-B26	VALVE CAP PACKING WASHER	H11-00749
KMB29-S01	TRIGGER SPRING	H10-01015
KMB29-S02	HAMMER SPRING	H10-01016
KMB29-S03	VALVE SPRING	H10-01017

PART#	ITEM	KWC#
KMB29-S04	RECOIL GUIDE ROD SPRING	H10-01018
KMB29-S05	SLIDE STOPPER SPRING	H10-01019
KMB29-S06	HAMMER CATCH SPRING	H10-01020
KMB29-S07	TRIGGER LINKAGE SPRING	H10-01021
KMB29-S08	SAFETY CATCH SPRING	H10-01022
KMB29-S09	FIRING PIN SPRING	H10-01023
KMB29-S10	OUTER BARREL CATCH SPRING	H10-01024
KMB29-S11	TRIGGER LINKAGE SPRING	H10-01025
KMB29-S12	BB CATCH SPRING	H10-01026
KMB29-S14	MAGAZINE SPRING	H10-01027
KMB29-S15	SAFETY LINKAGE SPRING	H10-01028
KMB29-S16	MAGAZINE CATCH SPRING	H10-01029
SPN-2.4	NUT SPN-2.4	H12-00410
EA024	SCREW#EA024-2.3*8	H12-00245-1
EA066	SCREW#EA066-2.3*8	H12-00268-1
EA132	SCREW#EA132-2.3*12	H12-00046-1
EA064	SCREW#EA064-2.3*6	H12-00266-2
ED007	E-RING	H21-00033
EF009	WRENCH	H10-01018
EA098	SET SCREW M2.0x 4 P0.4	H12-00375